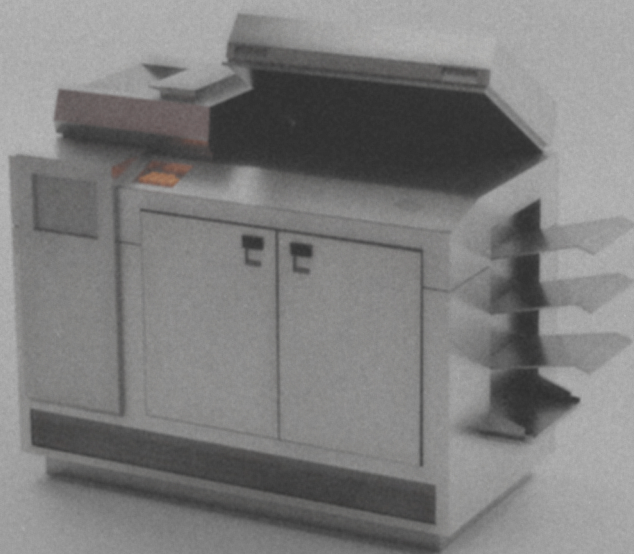


# CopyConductor 980 TX

## INSTRUCTIONAL MANUAL A: INSTALLATION



1

READ THIS MANUAL CAREFULLY BEFORE USING THIS MACHINE  
DO NOT PHOTOCOPY

**Congratulations on your purchase of a CopyConductor 980 TX! The finest in copying technology is in your hands, ready to take your office efficiency to the next level at a mere push of a button.**

**The future begins now!**

### **OPERATIONAL SAFETY**



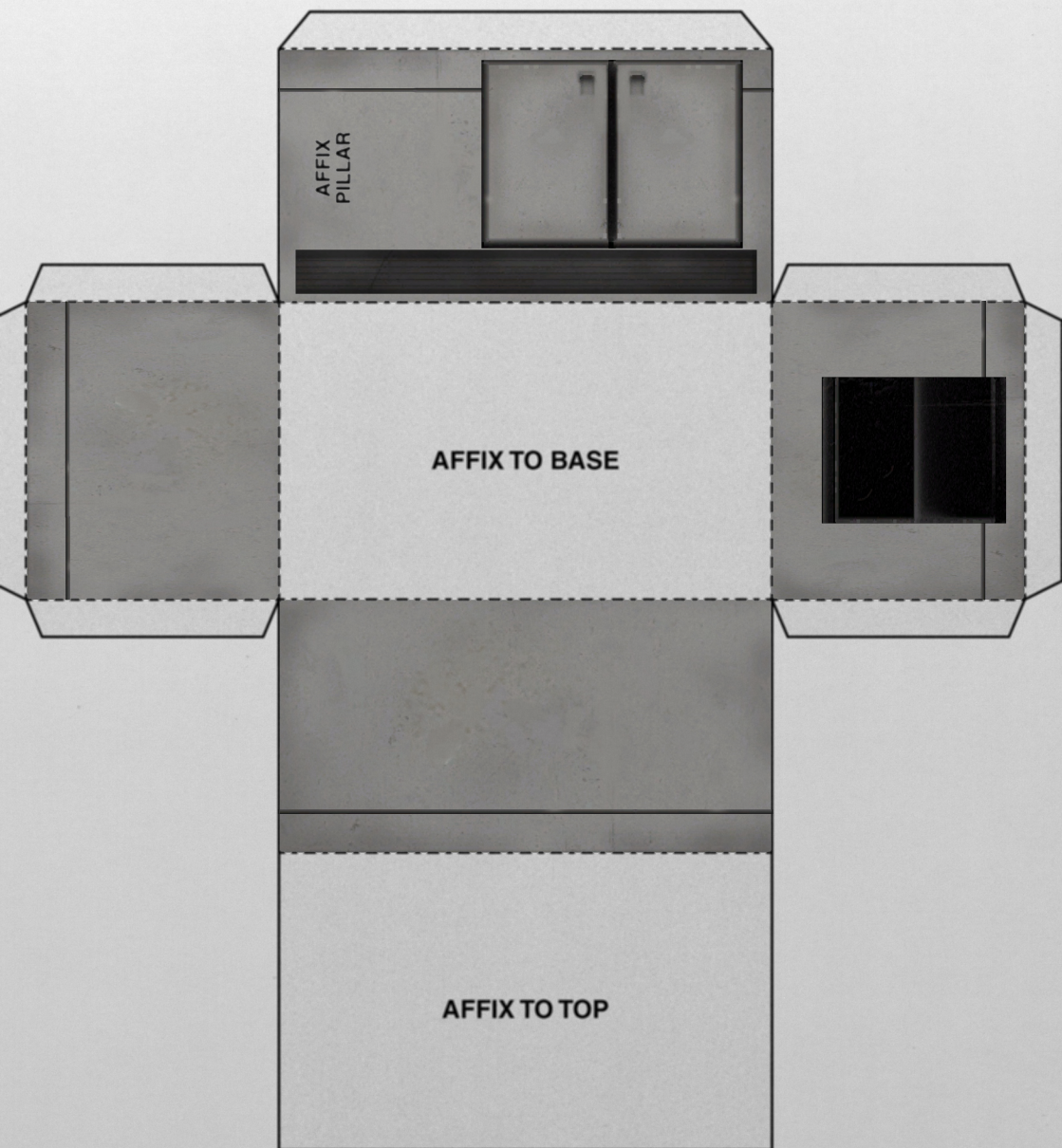
**Your attention to the following safety guidelines helps to ensure the continued, safe operation of your CopyConductor 980 TX.**

- **Place the copy machine in an area with adequate space for operating and servicing.**
- **Place the copy machine in a dust-free area.**
- **Do not store or operate the copy machine in an hot, cold, or humid environments.**
- **Place the copy machine on a level, solid non-vibrating surface.**
- **Do not place the copy machine in direct sunlight.**
- **Do not place the copy machine in total darkness.**

**Construct your CopyConductor 980 TX safely by taking care while handling sharp objects. Use a suitable adhesive to increase the longevity of your copy machine.**

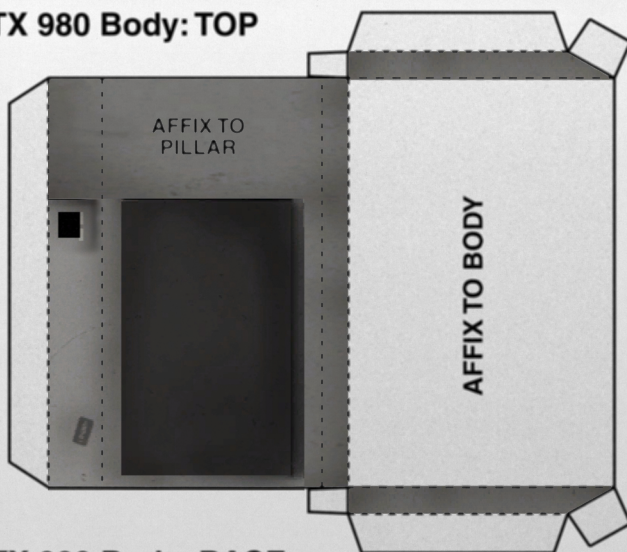
**THE FOLLOWING PAGES SHOW THE CORRECT INSTALLATION PROCEDURES FOR YOUR NEW CopyConductor 980 TX COPY MACHINE. FOLLOW THESE INSTRUCTIONS AND THOSE IN MANUAL A: FAMILIARIZATION (2), BEFORE MOVING ON TO MANUAL B: PROGRAMMING (1) AND HANDLING (2).**

# CopyConductor TX 980 Body

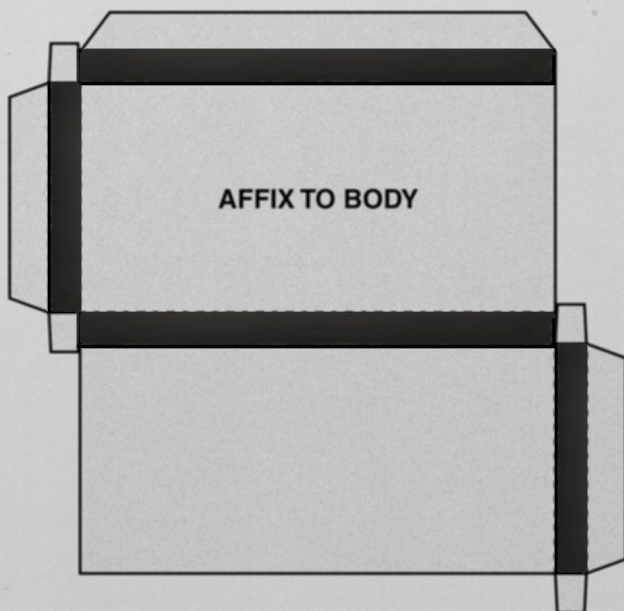


DO NOT PHOTOCOPY.

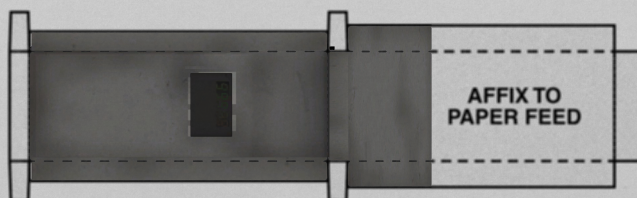
**CopyConductor TX 980 Body: TOP**



**CopyConductor TX 980 Body: BASE**

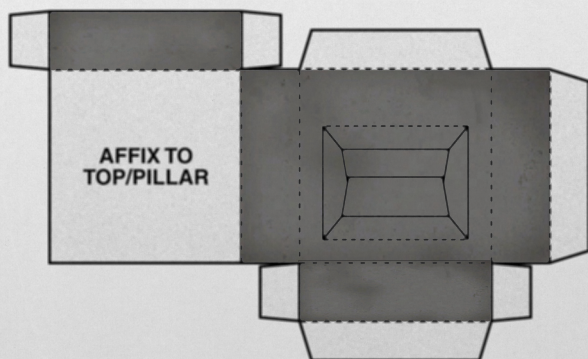


**CopyConductor TX 980 Body: PILLAR**

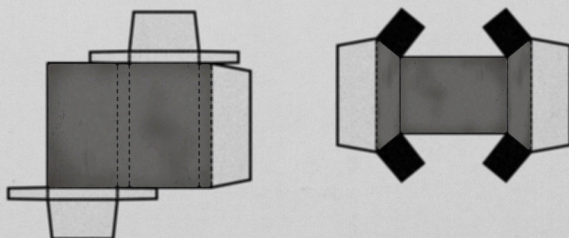


**DO NOT PHOTOCOPY.**

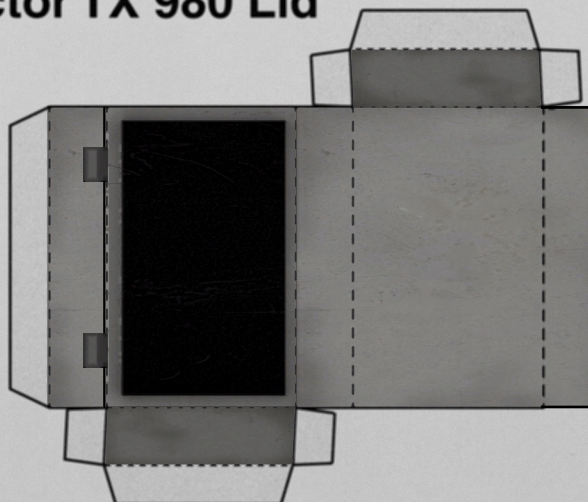
## CopyConductor TX 980 Additions: PAPER FEED OUTER



## CopyConductor TX 980 Additions: PAPER FEED TOP & INNER

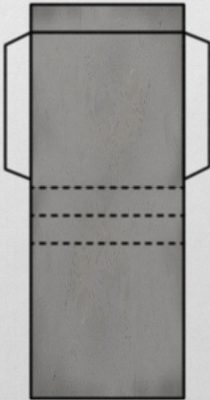
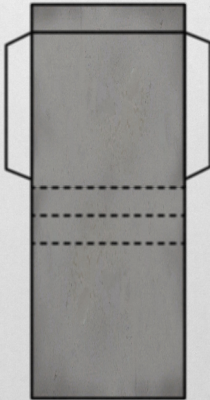
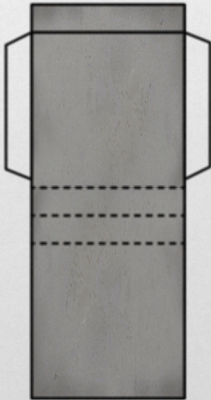


## CopyConductor TX 980 Lid

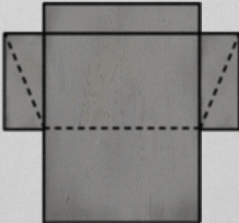


ATTACH TO BODY USING  
ADDITIONAL FLAP

**CopyConductor TX 980 Additions: PAPER OUTPUT SHELVES**



**CopyConductor TX 980 Additions: PAPER OUTPUT BOTTOM TRAY**



# CopyConductor 980 TX

***COPY YOU CAN TRUST!***